



Matera, Murgia Timone
The Passion of the Christ
Mel Gibson

Photo credits

Cover, Philippe Antonello

p. 1 - Domenico Notarangelo
Archivio Blu Video

p. 2 - Francesco Foschino
Sassi Web

p. 3 - Philippe Antonello

p. 5 - Tonino Capena

p. 6 - Domenico Notarangelo
Archivio Blu Video

p. 7 - Archivio APT

P. 9 - Philippe Antonello

P. 11 - Archivio APT

PP. 12-13 - Philippe Antonello

Inside Cover, Blu Video

Concept

Mariateresa Cascino

www.mtcom.info

Graphic design

Antonio Andrisani

www.antonioandrisani.com

Printing

Antezza Tipografi

Matera

Translation

Elizabeth Jennings

APT BASILICATA

AZIENDA DI PROMOZIONE TURISTICA
DI BASILICATA

via del Gallitello, 89

85100 Potenza

Tel. 0971 507611 - Fax 0971 507600

potenza@aptbasilicata.it

www.aptbasilicata.it

www.basilicata.travel

via Spine Bianche, 22

75100 Matera

Tel. 0835 331817 - Fax 0835 345402

matera@aptbasilicata.it



BASILICATA A FILM SET



APT BASILICATA
AZIENDA DI PROMOZIONE TURISTICA
DI BASILICATA

BASILICATA

A FILM SET



MOVIES FILMED IN BASILICATA



FERRANDINA

1998 DEL PERDUTO AMORE Michele Placido

CRACO

2006 THE NATIVITY STORY Catherine Hardwicke

2004 TERRA BRUCIATA Fabio Segatori
THE PASSION OF THE CHRIST Mel Gibson

1979 CHRIST STOPPED AT EBOLI Francesco Rosi

ALIANO

1979 CHRIST STOPPED AT EBOLI Francesco Rosi

ACCETTURA

1972 DON'T TORTURE A DUCKLING Lucio Fulci

IRSINA

1998 DEL PERDUTO AMORE Michele Placido

VULTURE MELFESE

2007 MINEURS Fulvio Wetzl

2002 I AM NOT SCARED Gabriele Salvatores

BARILE

1964 THE GOSPEL ACCORDING TO MATTHEW Pier Paolo Pasolini

MARATEA

2000 OGNI LASCIATO È PERSO Piero Chiambretti

1962 LA VEDOVELLA Silvio Siani

1960 A PORTE CHIUSE Dino Risi

MATERA

2007 LO STALLO Silvia Ferreri (Coming soon)

2006 THE NATIVITY STORY Catherine Hardwicke
THE OMEN John Moore

2005 IL RABDOMANTE Fabrizio Cattani

2004 THE PASSION OF THE CHRIST Mel Gibson

1995 THE STAR MAKER Giuseppe Tornatore

1990 IL SOLE ANCHE DI NOTTE Paolo e Vittorio Taviani

1985 KING DAVID Bruce Beresford

1981 THREE BROTHERS Francesco Rosi

1979 CHRIST STOPPED AT EBOLI Francesco Rosi

1978 VOLONTARI PER DESTINAZIONE IGNOTA Alberto Negrin

1975 THE TREE OF GUERNICA Fernando Arrabal

QUI COMINCIA L'AVVENTURA Carlo di Palma

1974 IL TEMPO DELL'INIZIO Luigi Di Gianni
ALLONSANFAN Paolo e Vittorio Taviani
YEAR ONE Roberto Rossellini

1972 THE BLACK DECAMERON Piero Vivarelli

1967 MORE THAN A MIRACLE Francesco Rosi

1965 MADE IN ITALY Nanni Loy

1964 THE GOSPEL ACCORDING TO ST. MATTHEW Pier Paolo Pasolini

1963 THE DEMON Brunello Rondi

1962 ANNI RUGGENTI Luigi di Zampa

1961 ITALIA '61 Jan Lenica

1960 L'ITALIA NON È UN PAESE POVERO Joris Ivens

1958 VIVA L'ITALIA Roberto Rossellini

1957 LA NONNA SABELLA Dino Risi

1953 THE DEVIL IS A WOMAN Alberto Lattuada

1950 LE DUE SORELLE Mario Volpe

1949 NEL MEZZOGIORNO QUALCOSA È CAMBIATO Carlo Lizzani



Matera, Murgia Timone
The Passion of the Christ
Mel Gibson

FROM 1950 TO 2007 IN BASILICATA 36 MOVIES HAVE BEEN FILMED

The ancient 'Sassi' district of Matera, the lunar landscape of the 'calanchi' – the deeply etched furrows of barren land – the sun-drenched land of the Vulture, the sparkling lights of the sea, the villages clinging to the hilltops. Basilicata as seen through the film lens, this area has been chosen by film directors for its stunning and enchanting landscapes. Basilicata's natural beauty is renowned, with its panoramas and art making it the new and natural choice for moviemakers from all over the world. Filmmakers of international renown are flocking to the region whose history is etched in every frame shot. The filmgoer as well embarks upon a new and fascinating journey into the heart of the unknown.



Matera
The gospel according to St. Matthew
Pier Paolo Pasolini

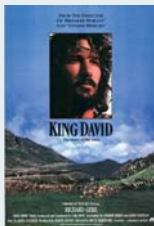
MATERA A BIBLICAL LANDSCAPE



“Matera. Some parts of the city are two thousand years old and it looks very much like what ancient Judea must have looked like. The architecture of the city, its rocks and the surrounding landscape are all excellent backdrops. The first time I saw Matera, I went crazy, because it was simply perfect.” **Mel Gibson**

2

“TO MY MIND, SPIRITUALITY IS AN AESTHETIC CONSIDERATION, NOT A RELIGIOUS ONE. I FELT THAT THE SMALLER, MORE HUMBLE THINGS ARE, THE LARGER AND MORE BEAUTIFUL THEY ARE IN THEIR POVERTY, AND THIS IDEA FOUND ITS AESTHETIC UNDERPINNINGS AND CONFIRMATION.” **PIER PAOLO PASOLINI**



“Yes, it is true that King David was a flop, but I’d do it all over again, because it gave me the opportunity to discover a remarkable city, Matera, which I would never have otherwise got to know.

Richard Gere





Matera, Murgia Timone
The Passion of the Christ
Mel Gibson



“THE SOUTH OF ITALY IS A HUMAN LATITUDE, A SPIRITUAL TEMPERATURE. A DAZZLING, SILENT, MOTIONLESS AREA WHERE MAN’S MOST HIDDEN QUIRKS AND ANCESTRAL TRAITS, ITS MOST TERRIBLE ANXIETIES RISE UP ALMOST INTACT TO THE SURFACE. THAT IS WHY I FELT THAT LUCANIA, THIS MARVELLOUSLY SCORCHED LAND, WAS THE VERY EPITOME OF THE DEEPEST SOUTH OF ITALY.” **BRUNELLO RONDÌ**

“Probably the reason why the story of our heroine was set in Luciana rather than in Apulia or in the area around Naples was that the real-life protagonist who was the inspiration for the heroine, Liliana Rossi, was a very modest and shy woman, very morally upright, and had a grace about her which the people of Lucania have not lost.”

Michele Placido



MOVIES FILMED IN HILL-TOP VILLAGES



Irsina
Del perduto amore
Michele Placido

“Christ Stopped at Eboli was first and foremost the pleasure of memory.”

Giovanni Grazzini
Corriere della Sera 1979



Craco
Christ Stopped at Eboli
Francesco Rosi

“The train continued on, past the capital, moving south. It was night time and I couldn’t sleep. Sitting on the hard bench, I thought of the past few days, of the feeling of being an outsider, of how politicians had a total lack of any sort of understanding for the life of the people who lived where I was headed.”

Carlo Levi



“THE FIRST TIME I SCREENED THE FILM OUTSIDE ITALY WAS IN CHICAGO, AT A FILM FESTIVAL ATTENDED BY THREE THOUSAND PEOPLE. I WAS SO SCARED AND WONDERED ‘WHAT ON EARTH CAN THESE PEOPLE, HERE IN AMERICA, HERE IN CHICAGO, POSSIBLY UNDERSTAND ABOUT IT? THE DEEP FURROWS IN THE EARTH, THE SCORCHED LANDSCAPE, THE PEASANTS, WHAT ON EARTH CAN THEY GRASP OF ALL THAT? AND YET, BY THE TIME THE FILM ENDED, EVERYONE WAS CRYING.” FRANCESCO ROSI



Craco



“Take the Naples-Bari highway, get out at Candela and go south. And you’ll come across wheat fields as far as the eye can see. It’s the soul’s landscape. The deep south of Italy, Magna Grecia, is an area that is often overlooked, where there remains a hint of the poetry of the peasantry. It is an area that was a perfect backdrop to depict Aqua Traverse, the haunting landscape described by Niccolò Ammaniti in his book that was made into a movie”.

Gabriele Salvatores

MOVIELANDSCAPE

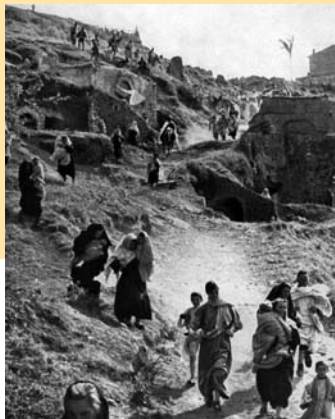
“WHEN YOU SEE BASILICATA YOU SEE FIELDS,
VINEYARDS, BEAUTIFUL LANDSCAPES.
YOU SEE THE LAND AS IT SHOULD BE.”

FRANCIS FORD COPPOLA





Vulture melfese
I am not scared
Gabriele Salvatores



Barile
The urban park of wine cellars
The gospel according to St. Matthew



“Miserable, plain, poverty-stricken places, not spectacular at all. And yet, quite sacred.”

Pier Paolo Pasolini



After becoming deeply depressed, wracked with suicidal and self-destructive thoughts, Piero Chiambretti seeks help through recourse to therapists, healers, clairvoyants, psychiatrists, priests of various religions and satanic sects. He talks to everyone, including a 28-meter high statue of Jesus Christ in **Maratea** . . .



Maratea
Statue of Christ



Vulture melfese
I am not scared
Gabriele Salvatores